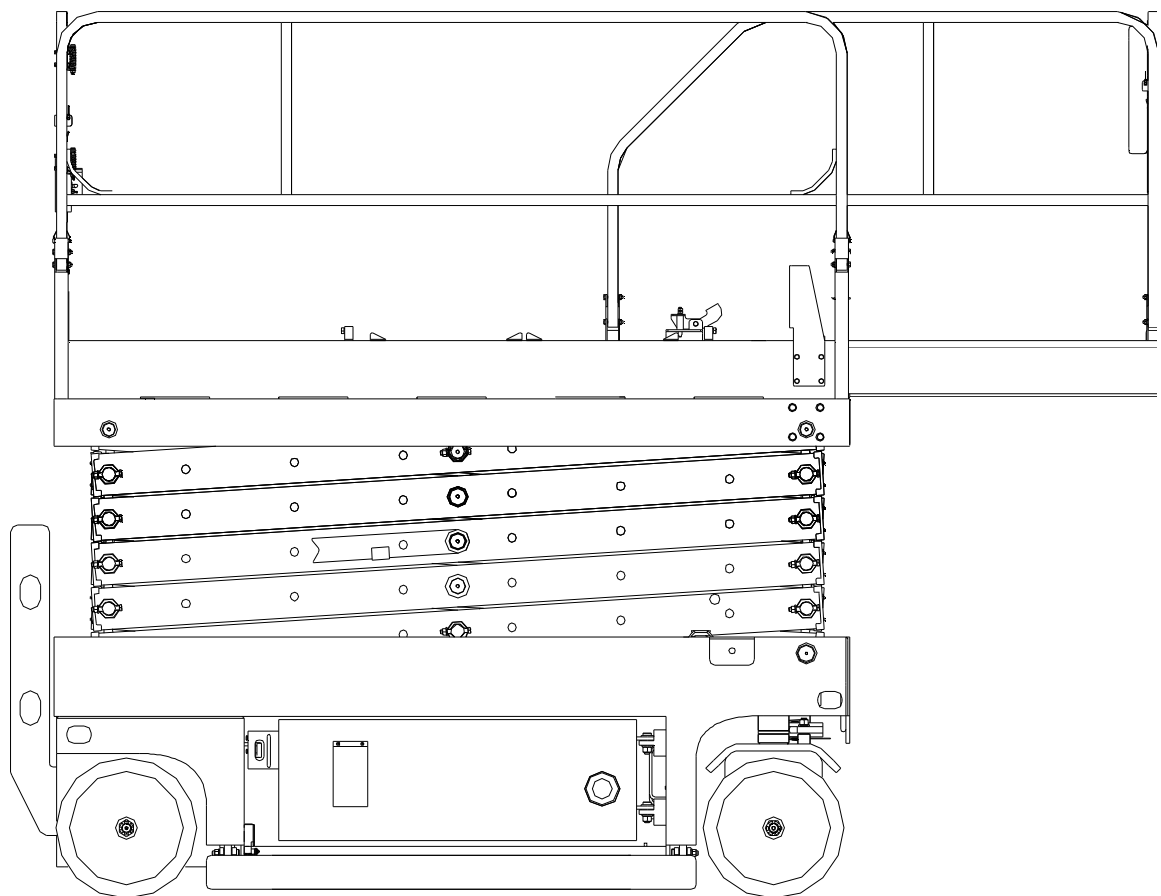




Hunan Sinoboom Heavy Industry Co., Ltd.

Technical Offer

GTJZ1012



Edition: 2014.04.12

SINOBOOM Self-propelled Scissor Lift (GTJZ1012)

Detailed Technical Offer

Content

I.	Company Profile.....	3
II.	Technical Parameters.....	4
III.	Technical Configuration.....	6
IV.	Product Feature	7
V.	Inspection.....	9
VI.	Warranty policy.....	10
VII.	SINOBOOM Honors and Certificates	12
VIII.	SINOBOOM PHOTOS	16

I. Company Profile

Founded on 28th Feb, 2008, Hunan SINOBOOM Heavy Industry Co., Ltd. is situated in Changsha, Hunan Province, China, known as the capital of engineering machinery in this country. This company is specialized in research, development, manufacturing, sale and service of aerial work equipment. There are four series of aerial work platforms, including self-propelled articulated boom lift /telescopic boom lift /scissor lift and spider lift, with working height from 6-44m. So far, the products have sold well all over China and the overseas market, e.g. Southeast Asia, Australia, Middle East, South America and Europe.

As a pioneer of aerial work platforms of China, the company owns the proprietary core technology and 30 items of intellectual property. Also sinoboom has come to be a member of IPAF (International Powered Access Federation) and China Engineering Machinery Association. In 2010, SINOBOOM was listed as one of key enterprises under four RMB100-billion industrial clusters (for equipment manufacturing) supported by the government. Meanwhile, SINOBOOM has passed the Australian ADR, European CE and Russian GOST.

Our products are widely used for ship building and repairing construction, civil engineering, electric power, communications, gardening, advertising, venues and stadiums, airport, harbor and various large factories and mines. It can satisfy the requirements of different customers in vary of industries.

Covering 200,000 m², Ninxiang County Jinzhou Industrial Park is an important carrier for sinoboom to develop further. The total investment in this program is approximately RMB 500,000,000. The area of Phase 1 is 66,667 m². The total building area is approximately 41,000 m², including 25,000 m² premises, e.g. Assembly Shop, Structure Shop, Coating Shop, Product Test Laboratory, Electric Laboratory, Hydraulic Laboratory, Office Building, Dormitory, etc. Phase 1 had been put into operation in April 2013. The production capacity will exceed RMB 500 million in value.

Vision decides height, height determines strength. With "Integrity brings business, Science makes progress", we are looking forward to cooperate with friends over the world.

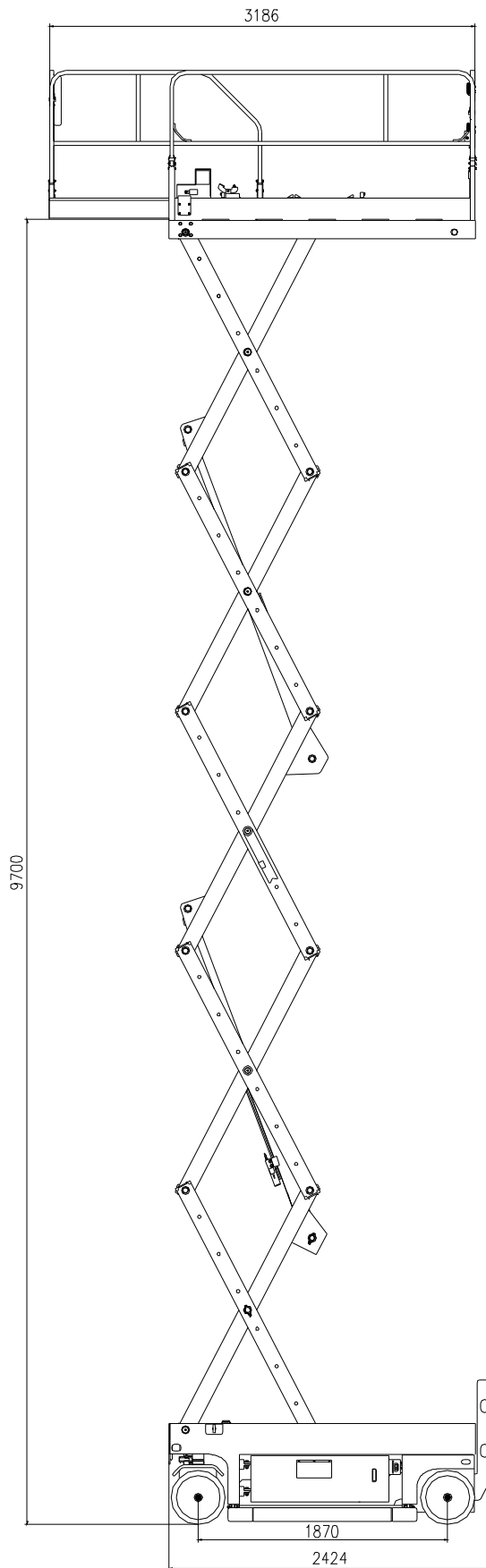


II. Technical Parameters

Technical Parameters

Model	GTJZ1012
Productivity	
Max. Platform height	9.7M
Max. Working height	11.7M
Extension outreach	0.9M
Turning radius (outside)	2.35M
Turning radius (inside)	0M
Rising/Falling speed (Without loading)	55s/40s
Grade ability	25%
Load capacity (Platform)	320kg
Driving Speed(stowed)	0~3.2km/h
Driving Speed (raised)	0~0.8km/h
Max allowable wind speed	12.5m/s
Max allowable slope (front/back)	3°
Max allowable slope (side/side)	1.5°
Dimensions	
Overall length(stowed)	2.43M
Overall width(stowed)	1.15M
Overall height (stowed, Guardrail folded)	1.92M
Overall height (stowed, Guardrail unfolded)	2.58M
Ground clearance	0.09M
Wheelbase	1.87M
Platform Size (L*W*H)	2.3*1.15*1.1M
Overall weight(for indoor and outdoor use)	2650kg
Overall weight(indoor use only)	2530kg
Tire	406*125 MM/solid
Hydraulic oil tank vol.	23L
Hydraulic system vol.	30L
Battery	6V*4/225AH
Control Voltage	24VDC
Power Unit	24VDC, 3KW
Drive & steer model	2WD, front wheel
Input voltage of Charger	100~240V AC
Output current of Charger	25A
Hydraulic system pressure	24MPA
Brake	2 rear wheel

Drawings of product design



III. Technical Configuration

Standard Configurations

NO.	Items	Producer
1	Driving Motor	WHITE from USA
2	Brake	WHITE from USA
3	Hydraulic Valve	HydraForce from USA
4	Power Unit	China
5	Battery	Trojan from USA
6	Scissor assembly	SINOBOOM
7	Work Platform	SINOBOOM
8	Under frame	SINOBOOM
9	Paint	SINOBOOM
10	Electric System	SINOBOOM/ DELTATECH
11	Hydraulic System	SINOBOOM
12	Controller	SINOBOOM
13	Pressure Sensor	IFM from Germany
14	Others	SINOBOOM

Optional configurations and devices:

1. The imported power unit;
2. The imported operation control system
3. Platform AC power outlets;
4. Compressed air line on the platform;
5. Folding guardrail of the platform;
6. 260Ah batteries of Trojan;
7. Yellow flashing warning lights;
8. Chassis conduction band;
9. Charging cable apply to socket standards from different countries.

Remark: For the items which will cost extra, please refer to the commercial quotation related.

IV. Product Feature

General Introduction

Hunan Sinoboom Heavy Industry is always for better access solutions.

Among its equipment families, the self-propelling scissor lift is powered by battery, with the operator driving it by the full proportional hydraulic control system like driving a car. With the compact design, some models can pass any narrow gate or door way.

Featured with high stress steel, compact size, big load and good stability, the Sinoboom electrical scissor lift can be driven forward, backward, turning, with the safety alarm indicating when necessary, sending people into the air for working to 11.7m and with 320kg payload.

The CE certificate (applicable for EU area) and Australia Design Registration (for Australia) also verify Sinoboom machines in some terms.

Performance Features

Motion System

Imported from Trojan of United State, the capacity of foursome serial batteries can reach to 225Ah (optional 260Ah), and it can be used about 5~7 hours under general conditions.

There is a battery charger adaptive voltage 220v inside the machine and a charging indicator outside. The charging indicator will give a signal when full charge finished.

With the battery meter the user could easily notice the battery volume and the working hour remaining.

Imported electrical motor and electrical motor controller could avoid the current surge and make the entire machine stable and reliable.

The machine could work while be charging. With various advanced technologies, the machine is energy saving and consumption reducing.

Hydraulic System

An open type hydraulic system has applied with explosion prevention strobe and emergency drop switch.

Electrical Appliance System

Controlled by PLC, the machine could perform more accurate for lifting, moving and turning actions. The protection grades reach to IP65 for the enclosed type charger and other major electrical components. Using special materials for the platform control cables (7 core), spiral cables for the control box, it is more convenient to operate and remove.

Moving and Turning

The machine is self-propelled with turning function, 2 wheel drive and 2 wheel steering.

The hydraulic oil passes over the controlling strobe cube in order to providing the lifting and turning functions.

Non-marking tire help to prevent the damage to the floor and stuck by the impurities.

Controlling System

Both ground control and platform control panel can work.

The ground control provides the lifting feature and the platform control panel provides all functions include lifting, turning, walking and so on.

The one handed proportional joystick made in USA provides flexibility, and can be satisfactory for the operators in many different situations.

By optimizing the control mode and control procedures, the machine operation is more user-friendly on the premise of the assurance of safety and reliability. The operation procedure is simplified and workable for both indoor and outdoor environment. The machine can work on heeling condition with maximum gradient of longitudinal 3 degrees, lateral 1.5 degrees. The machine could keep moving in high speed. When the pit protection board is not fully open, the moving function of machine is limited, while the platform may continue to rise with sound and light alarm, it is more efficient for working.

Platform and platform Loading Capacity

Big platform area with extra skid proof patterned platform baseplate, tool box option.

The loading capacity of the platform is up to 320kg.

Platform can be horizontally extended and the extension platform carrying up to 120kg, it is highly expands the working area.

Safety Performance

Equipped with imported level switch, weight sensor and travel switch, controlled by advanced control procedures, the machine is more safety for equipment and workers.

A safety bar has attached on the prong part of the machine, to guarantee the safety of the serviceman while they repairing the machine.

Others

- 1 Equipped with forklift slots and hoisting hole;
- 2 The main components of machine using electrophoretic coating process, it prevents both the internal and external parts from rust;
- 3 The imported special bearings jointing the scissor parts by shaft sleeve are with good lubrication performance and free of maintenance.
- 4 The working platform is made from pattern-steel plate which improves the antiskid effect. The drain hole on the platform prevents ponding.
- 5 Cartridge guardrail is standard-equipped, and folding guardrail is optional.

V. Inspection

- I Sinoboom will conduct the inspection as per EN280 standard or special configurations if any;
- I Clients can perform the receiving test as per below guide table:

Inspection Item	Status	Result
1. Overall inspection		
Surface inspection		
Bolts state inspection		
Labels inspection		
Instrumentation inspection		
2. Ground control		
Key switch		
Emergency stop switch		
Re-start delay		
3. Platform control		
Emergency stop switch		
Re-start delay		
Platform extension		
Scissors raised		
Scissors lowed		
High-speed travel		
Low-speed travel		
4. Safety		
Loading test		
Control panel		
Gradeability		
Lock function for scissor raise		

VI. Warranty policy

1. General Condition

Under normal operating conditions, Sinoboom provides the following warranty service based on that the machines are operated and maintained correctly as per instruction in the Operation and Maintenance Manual.

2. Warranty range

- I Warranty service and parts including: Structure parts, most of the hydraulic parts, most of the electric parts or related system failure which are under correct operation and regular maintenance following the Operation & Maintenance manual.
- I Warranty parts excluding: All wearing parts (Engine filter elements including air/engine oil/diesel oil, hydraulic system filters, cylinder sealing elements, all the fuses, relays, etc.) , failures caused by hydraulic system cleansing.

3. Warranty contents

- I The machine cannot start or use normally by any reasons such as parts problem, design problem or manufacture problem;
- I Any operation failure caused by welding defect;
- I Joystick failure or hydraulic oil leak caused by the manufacturer assembly process;
- I Engine and motors' warranty will follow the parts manufacturers' warranty manual;
- I Any difference which cannot reach an agreements will follow the third party's inspection reports;

4. Other related service

- I Free remote guidance about installation and adjustment for new delivery machine;
- I Periodically inspect the machines condition and instruct maintenance and repair, free within the warranty period and at cost when out of warranty;
- I Free parts replacements for quality claims within the warranty period, and at cost when out of warranty;
- I Long time technical service, maintenance services and training services after warranty period, parts and labor will be at cost;

5. "5+2+1" Warranty period

- I The big structure parts including chassis, turntable, booms, outriggers, telescopic shafts, engine bracket, will be guaranteed five years or operation time add up to 6000 hours, whichever comes first;
- I The complete appliance will be guaranteed one year or operation time add up to 2000 hours, whichever comes first;

- I Detailed guarantees classification and timetable please refer to the list in the sinoboom warranty manual;
- I Warranty period will be calculated starting from the machines arrival at buyers' stock yard;
- I After the warranty period, Sinoboom still offers life-long maintenance, spare parts supply and technical support services with cost charged.

6. Conditions not applied to this Warranty Policy

- I Not following the manuals to operate the machines, nor to maintain the machines periodically;
- I Rebuilt, parts replace or personally repair without Sinoboom aforehand confirmation from Sinoboom;
- I Parts normal wear under daily usage;
- I Usage of parts which are not sinoboom original parts without aforehand confirmation from Sinoboom;
- I Machines are wrongly installed or used, or machines are used under abnormal conditions, or machines are treated with improper parts like fuel oil, engine oil or lubricating oil; event under accident or fire or other force majeure.
- I Continuous operations on the machines even spotted some problems or failures without timely quality claim, which results further damages.

7. Our service promises

- I Our service team is 24 hours available online to receive your quality claims;
- I We will reply your phone call or emails within 2 hours by receiving;
- I For better, faster and exact service, you will have to fill and report your claims under our sheets and related requirements;
- I If any claims about our service, we will quickly react and give you a reasonable response accordingly;
- I Sinoboom reserves the right of final explanation about the above warranty policy;

VII. SINOBOOM Honors and Certificates

IPAF certificate of membership



ISO9001-2000 certificate



SINOBOOM CE Certificates - For European market

Client: Hunan Sinoboom Heavy Industry Co., Ltd.
278 Baotian Road,
Changsha,
Hunan,
P.R.China

SGS United Kingdom Limited
Unit 10
Sovereign South Industrial
Estate
Sovereign
Dartford
DA9 9AD

Page 1 of 1

CERTIFICATE OF ADEQUACY

Certificate No. 2021 730

SGS United Kingdom Ltd is a notified body approved by the DTI under the Machinery Directive 2006/42/EC.
Approval Number: 2021.

Date of Issue	17 th May 2021
SGS Reference	COT13893/1/17
Date of Product	Electric scissor lift MODEL TYPE: GTJZ 06, GTJZ 08, GTJZ 10
Technical File Reference No.	OUCE0310
Date of Assessment	17 th May 2021
Assessment Performed	Assessed for compliance with the requirements of Annex VI of the Machinery Directive 2006/42/EC (Annex VI)
Conclusion	In the opinion of SGS the submitted technical file as assessed as OUCE 13108 satisfied the requirements of the Machinery Directive 2006/42/EC.
Issue No.	1
Valid until	16 th May 2025

This certificate is valid only for the sample submitted for test. The certificate shall not be reproduced except by the holder. In written approval of SGS United Kingdom Limited.

This CE mark is shown before the CE mark, under the responsibility of the manufacturer, after completion of an EC Declaration of Conformity and compliance with all relevant EC Directives.

F. Huggins

F. Huggins
Principal Test Engineer

All enquiries relating to this certificate should be directed to the Test Engineer.

Page 1 of 1
10063018

Client: Hunan Sinoboom Heavy Industry Co., Ltd.
278 Baotian Road,
Changsha,
Hunan,
P.R.China

SGS United Kingdom Limited
Unit 10
Sovereign South Industrial
Estate
Sovereign
Dartford
DA9 9AD

Page 1 of 1

EC TYPE EXAMINATION CERTIFICATE

Certificate No. 2021 740

SGS United Kingdom Ltd is a notified body approved by the DTI under the Machinery Directive 2006/42/EC.
Approval Number: 2021.

Date of Issue	17 th May 2021
Technical Product	Electric scissor lift MODEL TYPE: GTJZ 06, GTJZ 08, GTJZ 10
Manufacturer	Hunan Sinoboom Heavy Industry Co., Ltd.
Date of Product	17 th May 2021
Technical File Reference No.	OUCE0310
Assessment Performed	Type examination with reference to: Conformity to Annex II and Annex I, the Essential Health and Safety Requirements of the Machinery Directive 2006/42/EC section 1
Standards referenced	EN 280:2011+A2:2009; EN ISO 14121:1:2007
Conditions Subject to Issue	Assessment of information contained in Technical File OUCE0310 and referenced against file COT13893/1/17
Conclusion	In the opinion of SGS the submitted technical file satisfies the requirements of the Machinery Directive 2006/42/EC.
Issue No.	1
Valid until	16 th May 2025

This certificate is only valid for the applicant and product described in conjunction with the data stated above. This certificate shall not be reproduced except by the holder without the written approval of SGS United Kingdom Limited.

The CE mark shall only be used with the responsibility of the manufacturer, after completion of an EC Declaration of Conformity and compliance with all relevant EC Directives.

F. Huggins

F. Huggins
Principal Test Engineer

All enquiries relating to this certificate should be directed to the Test Engineer.

Page 1 of 1
10063018

Client: Hunan Sinoboom Heavy Industry Co., Ltd.
278 Baotian Road,
Changsha,
Hunan,
P.R.China

SGS United Kingdom Limited
Unit 10
Sovereign South Industrial Estate
Sovereign
Dartford
DA9 9AD

Page 1 of 1

CERTIFICATE OF COMPLIANCE

Certificate No. 1302361

SGS United Kingdom Ltd is a notified body approved by the DTI under the Machinery Directive 2006/42/EC.
Approval Number: 2021.

Product description	Electric scissor lift MODEL TYPE: GTJZ 06, GTJZ 08, GTJZ 10
SGS Reference	COT13893/1/17
Date of Issue	17 th May 2021
Date of Assessment	17 th May 2021
Issue of Issue	17 th May 2021
Conclusion	The submitted sample was found to comply with the test specification 1302361 to 2006/42/EC Annex I and therefore deemed to offer the degree of safety required by the Electrical Equipment (Safety) Regulations 2016, (UK implementation of Directive 2006/95/EC).
Issue No.	1
Valid until	16 th May 2025

This certificate is valid for the sample submitted for test. The certificate shall not be reproduced except by the holder. In written approval of SGS United Kingdom Limited.

This CE mark is shown before the CE mark, under the responsibility of the manufacturer, after completion of an EC Declaration of Conformity and compliance with all relevant EC Directives.

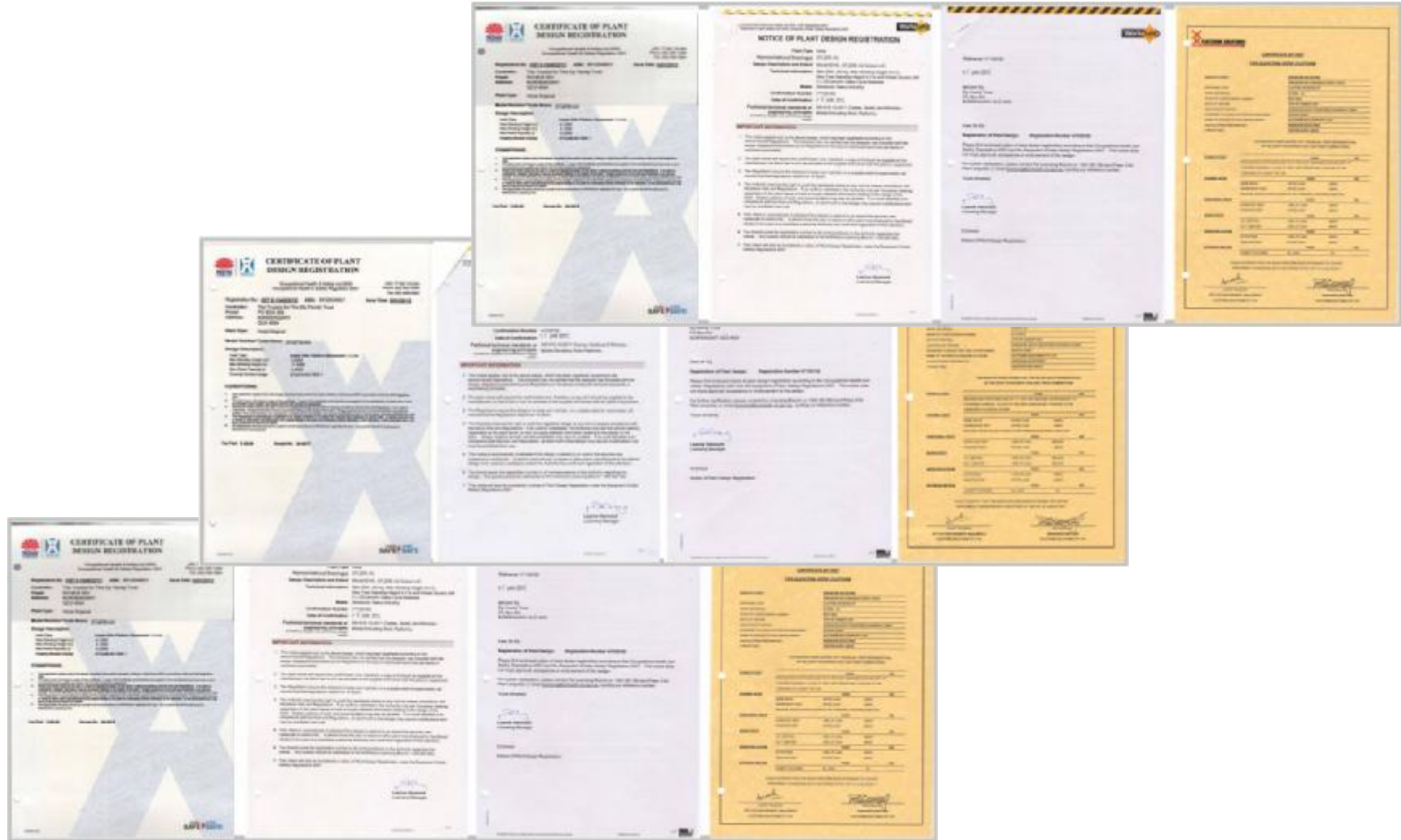
F. Huggins

F. Huggins
Principal Test Engineer

All enquiries relating to this certificate should be directed to the Test Engineer.

Page 1 of 1
10063018

SINOBOOM ADR Certificates- For Australia & New Zealand market



SINOBOOM GOST-TR3 Certificates – For Russia

РОССИЙСКАЯ ФЕДЕРАЦИЯ СЕРТИФИКАТ СООТВЕТСТВИЯ (обязательная сертификация)	
№ <u>C-CN.AG75.B.21950</u> <small>(номер сертификата соответствия)</small>	ТР <u>1664341</u> <small>(учетный номер бланка)</small>
ЗАЯВИТЕЛЬ Hunan SINOBOOM Heavy Industry Co.,Ltd. Адрес: 27# Nan'er Rd, Economic & Technical Development Zone, Changsha, Hunan, China 410100, Китай. Телефон 0086 731 87116500, факс 0086 731 87116516. <small>(наименование и место нахождения заявителя)</small>	
ИЗГОТОВИТЕЛЬ Hunan SINOBOOM Heavy Industry Co.,Ltd. Адрес: 27# Nan'er Rd, Economic & Technical Development Zone, Changsha, Hunan, China 410100, Китай. <small>(наименование и место нахождения изготовителя продукции)</small>	
ОРГАН ПО СЕРТИФИКАЦИИ ООО «ПродМашТест». 127015, Москва, Бумажный пр., 14, стр. 1 <small>(наименование и место нахождения органа по сертификации)</small> Телефон/факс: (495) 7634799/(495) 7634799. ОГРН: 1117746593557. Аттестат рег. № РОСС RU.0001.11AG75 выдан 28.10.2011г. Федеральным агентством по техническому регулированию и метрологии. ПОДТВЕРЖДАЕТ, ЧТО Подъемники с рабочими платформами самоходные, моделей : GTJZ06, GTJZ08, GTJZ10, GTJZ12, GTJZ16, GTZZ14E, GTZZ15, GTZZ15J, GTZZ18, GTZZ25, GTBZ20, GTBZ22, GTBZ25, GTBZ26, GTBZ27, GTBZ28, GTBZ30, GTBZ32, GTBZ36, GTBZ38, GTBZ40, GTBZ42. Серийный выпуск.	
	код ОК 005 (ОКП) 48 3700
СООТВЕТСТВУЕТ ТРЕБОВАНИЯМ Технический регламент в безопасности машин и оборудования (Постановление Правительства РФ от 15.09.2009 N 753) (ТЕХНИЧЕСКОГО РЕГЛАМЕНТА (ТЕХНИЧЕСКИХ РЕГЛАМЕНТОВ))	
<small>(наименование технического регламента (технических регламентов), на соответствие требованиям которого (которых) проверялась продукция)</small>	код ЕКПС код ТН ВЭД России 8428 90 909 0
ПРОВЕДЕННЫЕ ИССЛЕДОВАНИЯ протокол исследований № 66918-48 от 13.02.2013 г. Испытательная лаборатория ООО «ПродМашТест», рег. № РОСС RU.0001.21AB79 от 28.10.2011г., адрес: 127015, Москва, Бумажный пр., 14, стр.1 (ИСПЫТАНИЯ) И ИЗМЕРЕНИЯ	
ПРЕДСТАВЛЕННЫЕ ДОКУМЕНТЫ <small>(документы, представленные заявителем в орган по сертификации в качестве доказательств соответствия продукции требованиям технического регламента (технических регламентов))</small>	
СРОК ДЕЙСТВИЯ СЕРТИФИКАТА СООТВЕТСТВИЯ с <u>14.02.2013</u> по <u>13.02.2016</u>	
	Руководитель (заместитель руководителя) органа по сертификации <small>(подпись, инициалы, фамилия)</small> Мыльцев В.В.
	Эксперт (эксперты) <small>(подпись, инициалы, фамилия)</small> Чугунов А.А.

VIII. SINOBOOM PHOTOS

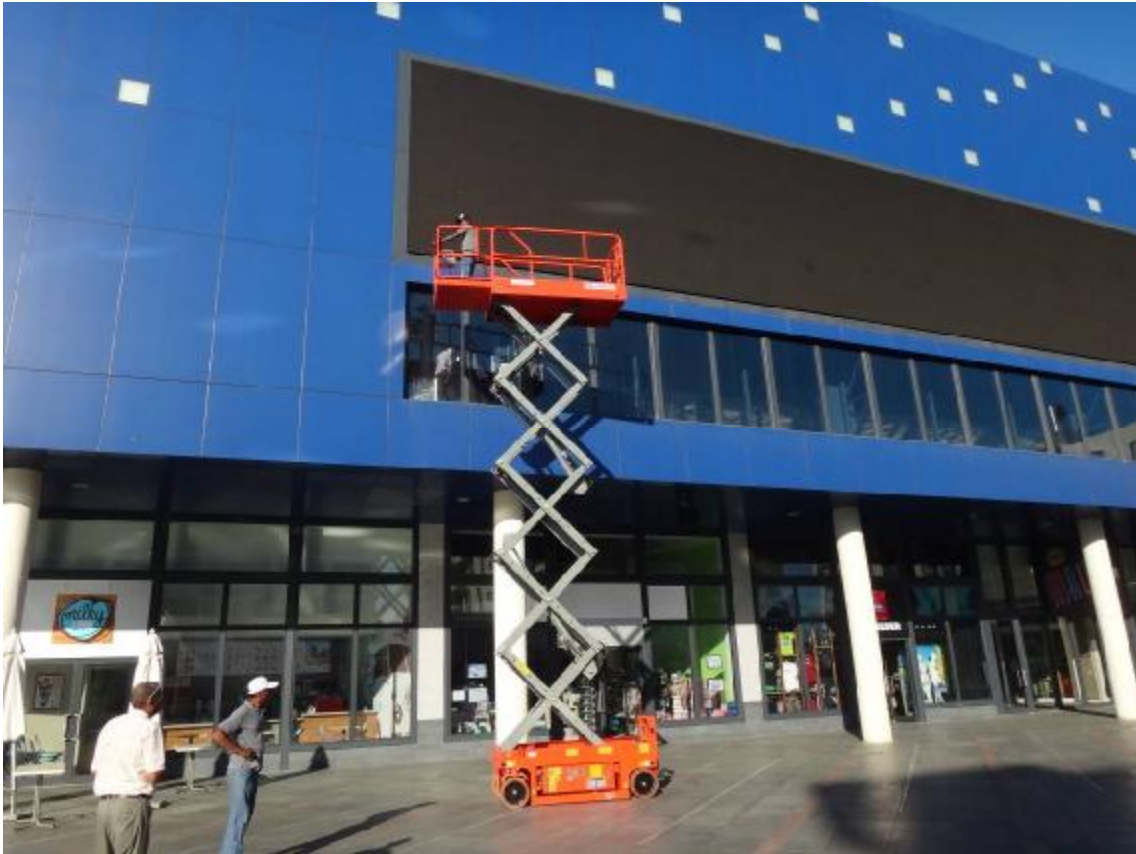
Assemble workshop glance



GTJZ0408S/0608S-GTJZ0608/0808-GTJZ1012/Z1212 group show



GTJZ1012E for shopping mall external cleansing



GTJZ0608 for facility maintenance



GTJZ0808 for construction jobsite



GTJZ12 In warehouse for goods sorting



GTJZ10 for outdoor advertisement



GTJZ10 being used in Ukraine Airport



GTJZ0808 working for store decoration



GTJZ1012 / GTJZ1212 working for FAW-Volkswagen Automobile new facility

